

# PTS-PRÜFTECHNIK COMPETENCES

Powertrain systems  
Powertrain components  
Vehicle testing and vehicle technology  
Design and Simulation  
Thermal management  
Environmental testing  
Battery and fuel cell



FACING THE FUTURE  
TOGETHER!

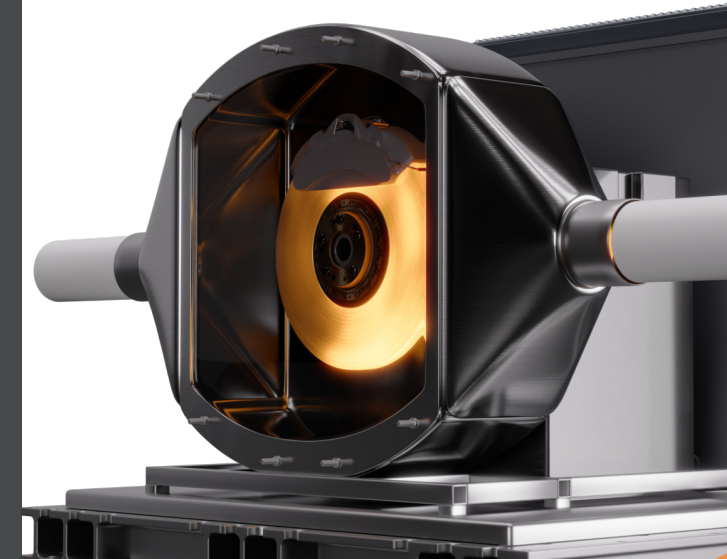
# PTS-LOCATIONS FOR ENGINEERING SERVICES



Waldstetten  
Schwäbisch Gmünd  
Remshalden  
Ingolstadt  
Wolfsburg

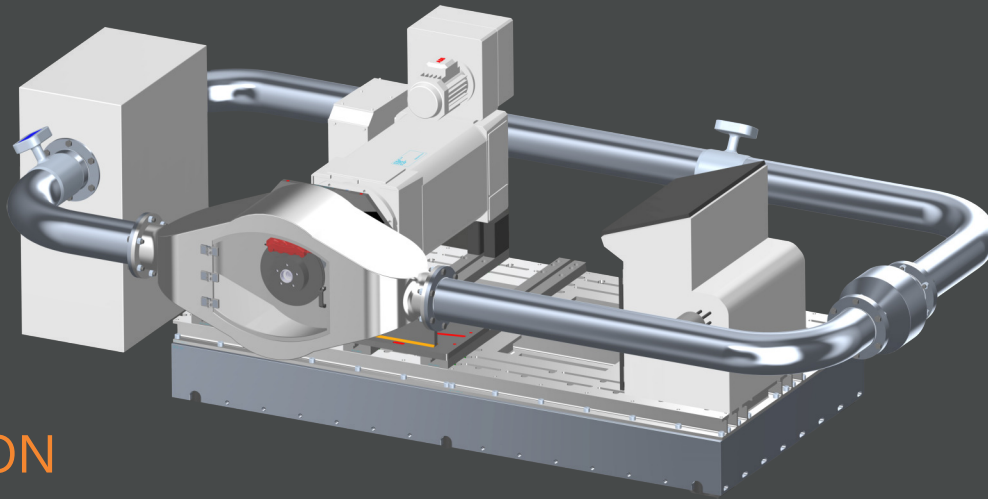
## CONTACT PHONE / WEB / E-MAIL

+49 7171 9080 071  
info@pts-prueftechnik.de  
www.pts-prueftechnik.de



YOUR PARTNER  
IN BRAKE EMISSION  
TESTING





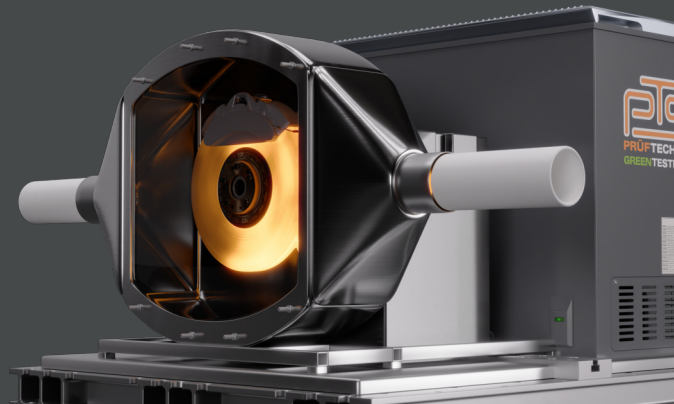
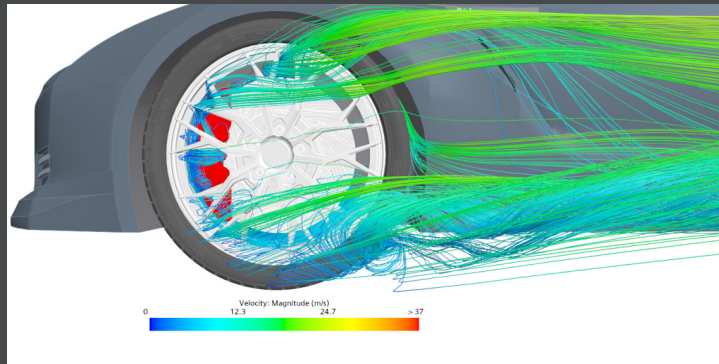
## BRAKE EMISSION SERVICES

Measurement of particle mass (PM):  
PM2.5 and PM10

Acquisition of particle number (PN): Measurement of solid and total PN

Any driving profiles can be displayed (e.g. WLTP- Brake)

Testing of different vehicle classes possible



## BRAKE EMISSION TESTING ACC. TO UN GTR PROCEDURE

**Cooling flow adjustment** - Adjust airstream speed for comparable brake thermal regimes

**Bedding procedure** - Precondition brake assembly and stabilize its emission behaviour

**Emissions measurement** - Determine emission factors for brake in g/km

**Mass loss measurement** - Verify robustness of overall test procedure

## PTS-PRÜFTECHNIK YOUR ADVANTAGES

Research and development partnership for the optimum implementation of your specifications

Comprehensive assumption of responsibility for the development of your components and systems

Expertise in complex issues including mobility, energy, aviation, industry, medical/food technology, building aerodynamics as well as electrics and electronics

Many years of combined R&D experience among our interdisciplinary engineers and specialists

Quality management in accordance with  
DIN EN ISO 9001:2015

Environmental management in accordance with  
DIN EN ISO 14001:2015

## CONTACT PHONE / WEB / E-MAIL

+49 7171 9080 071  
[www.pts-prueftechnik.de](http://www.pts-prueftechnik.de)  
[info@pts-prueftechnik.de](mailto:info@pts-prueftechnik.de)